

**MODEL NO : TM050RDHG16**

**MODEL VERSION: 00**

**SPEC VERSION : V2.0**

**ISSUED DATE: 2019-02-18**

- Preliminary Specification  
 Final Product Specification

Customer : \_\_\_\_\_

Approved by	Notes

TIANMA Confirmed :

Prepared by	Checked by	Approved by
Haiping_luo	Huixuan_chen Huiping_qing Paijie_chen Wei_guo	Guangkun_an

This technical specification is subjected to change without notice

## Table of Contents

Table of Contents .....	2
Record of Revision.....	3
1 General Specifications.....	4
2 Input/Output Terminals .....	5
3 Absolute Maximum Ratings.....	7
4 Electrical Characteristics .....	7
5 Timing Chart.....	10
6 Optical Characteristics .....	14
7 Environmental / Reliability Test.....	17
8 Mechanical Drawing .....	18
9 Packing Drawing .....	19
10 Precautions for Use of LCD Modules .....	21



## 1 General Specifications

Feature		Spec	
<b>Display Spec.</b>	Size	5.0 inch	
	Resolution	800(RGB) x 480	
	Technology Type	a-Si TN	
	Pixel Configuration	R.G.B. Vertical Stripe	
	Pixel pitch(mm)	0.135*0.135	
	Display Mode	TM with Normally White	
	Surface Treatment	Anti-Glare(3H)	
	Viewing Direction	12 o'clock	
	Gray Scale Inversion Direction	6 o'clock	
<b>Mechanical Characteristics</b>	LCM (W x H x D) (mm)	120.70x75.80x3.10	
	Active Area(mm)	108.00x64.80	
	With /Without TSP	Without TSP	
	Matching Connection Type	FH34SRJ-40S-0.5SH	
	LED Numbers	14 LEDs	
	Weight (g)	62	
<b>Electrical Characteristics</b>	Interface	RGB 24bits	
	Color Depth	16.2M	
	Driver IC	Gate IC	HX8664-B00BPD400-B
		Source IC	HX8264-D02DPD400-A

Note 1: Viewing direction for best image quality is different from TFT definition. There is a 180 degree shift.

Note 2: Requirements on Environmental Protection: Q/S0002

Note 3: LCM weight tolerance:  $\pm 5\%$

## 2 Input/Output Terminals

Matching connector: FH34SRJ-40S-0.5SH (Hirose)

No	Symbol	I/O	Description	Comment
1	VLED-	P	Back light cathode	
2	VLED+	P	Back light anode	
3	GND	P	Ground	
4	VDD	P	Power supply	
5	R0	I	Data input	
6	R1	I	Data input	
7	R2	I	Data input	
8	R3	I	Data input	
9	R4	I	Data input	
10	R5	I	Data input	
11	R6	I	Data input	
12	R7	I	Data input	
13	G0	I	Data input	
14	G1	I	Data input	
15	G2	I	Data input	
16	G3	I	Data input	
17	G4	I	Data input	
18	G5	I	Data input	
19	G6	I	Data input	
20	G7	I	Data input	
21	B0	I	Data input	
22	B1	I	Data input	
23	B2	I	Data input	
24	B3	I	Data input	
25	B4	I	Data input	
26	B5	I	Data input	
27	B6	I	Data input	
28	B7	I	Data input	
29	GND	P	Ground	
30	CLKIN	I	Clock for input data. Data latched at falling edge of this signal.	
31	STBYB	I	Standby mode. STBYB="1": Normally operation. STBYB="0": Standby mode .Timing controller, source driver will turn off, all output are High-Z.	
32	HSD	I	Horizontal sync input, negative polarity	Support SYNC mode only
33	VSD	I	Vertical sync input, negative polarity	
34	DEN	I	Data input enable, effective only in DE mode.	
35	NC	--	No connection	
36	GND	P	Ground	
37	XR	--	NC	
38	YD	--	NC	
39	XL	--	NC	
40	YU	--	NC	

Note1: Please add the FPC connector type and matched one if necessary .

Note2: I—Input, O—Output, P—Power/Ground

TIANMA CONFIDENTIAL

### 3 Absolute Maximum Ratings

GND=0V

Item	Symbol	MIN	MAX	Unit	Remark
Power Voltage	VCC	-0.5	3.96	V	Note1
Input voltage	V <sub>IN</sub>	-0.5	3.96	V	
Operating Temperature	Top	-20	70	°C	
Storage Temperature	Tst	-30	80	°C	
Relative Humidity Note2	RH	--	≤95	%	Ta≤40°C
		--	≤85	%	40°C < Ta ≤ 50°C
		--	≤55	%	50°C < Ta ≤ 60°C
		--	≤36	%	60°C < Ta ≤ 70°C
		--	≤24	%	70°C < Ta ≤ 80°C
Absolute Humidity	AH	--	≤70	g/m <sup>3</sup>	Ta>70°C

**Table 3 Absolute Maximum Ratings**

Note1: Input voltage include R0~R7,G0~G7,B0~B7,CLKIN,STBYB,HSD,VSD,DEN

Note2: Ta means the ambient temperature.

It is necessary to limit the relative humidity to the specified temperature range.  
Condensation on the module is not allowed.

### 4 Electrical Characteristics

#### 4.1 Driving TFT LCD Panel

Item	Symbol	Min	Typ	Max	Unit	Remark
Supply Voltage	VDD	3.2	3.3	3.4	V	
Input Signal Voltage	Low Level	V <sub>IL</sub>	0	--	0.3xVDD	V
	High Level	V <sub>IH</sub>	0.7xVDD	--	VDD	V
Output Signal Voltage	Low Level	V <sub>OL</sub>	--	--	GND+0.4	V
	High Level	V <sub>OH</sub>	VDD-0.4	--	--	V
(Panel+LSI) Power Consumption	Black Mode (60Hz)		297		mW	
	Standby Mode		101		mW	

Note1: For different LCM, the value may have a bit of difference.

Note2: To test the current dissipation, use "all Black Pattern".

**4.2 Backlight Unit**

Item	Symbol	Min	Typ	Max	Unit	Remark
Forward Current	$I_F$	-	40	-	mA	Note 1
Forward Voltage	$V_F$	18.5	21.7	23.8	V	
Backlight Power Consumption	$W_{BL}$	-	868	-	mW	
Life Time	-	10,000	20,000	-	Hrs	Note 3

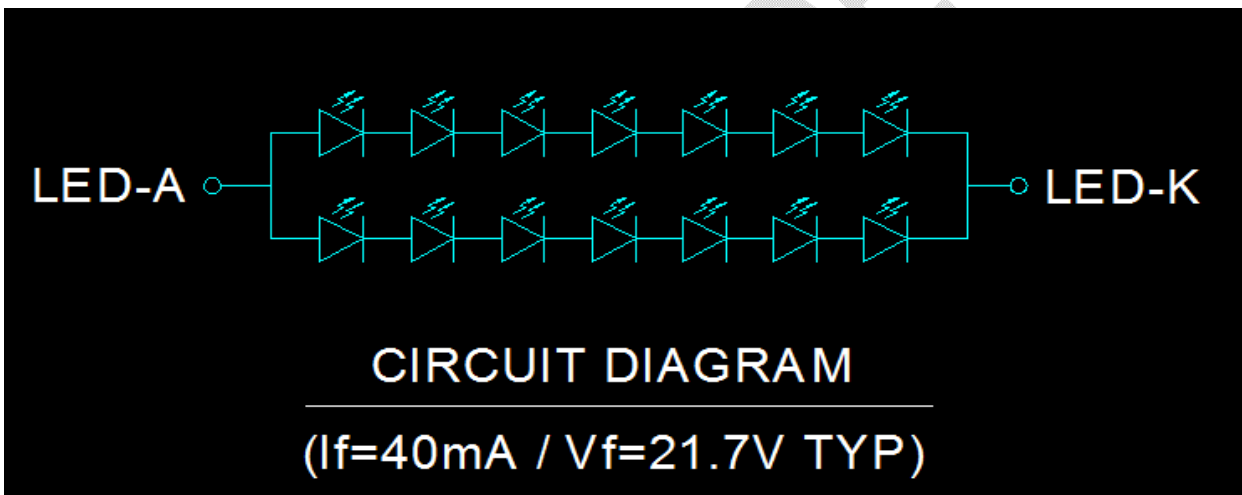
**Table 4.2 LED backlight characteristics**

Note1: The LED driving condition is defined for each LED module (7 LED Serial, 2 LED Parallel).

Note2: Under LCM operating, the stable forward current should be inputted. And forward voltage is for reference only.

Note3:  $I_F$  is defined for one channel LED. Optical performance should be evaluated at  $T_a=25^\circ\text{C}$  only if LED is driven by high current, high ambient temperature & Humidity condition. The life time of LED will be reduced. Operating life means brightness goes down to 50% initial brightness. Typical operating life time is estimated data.

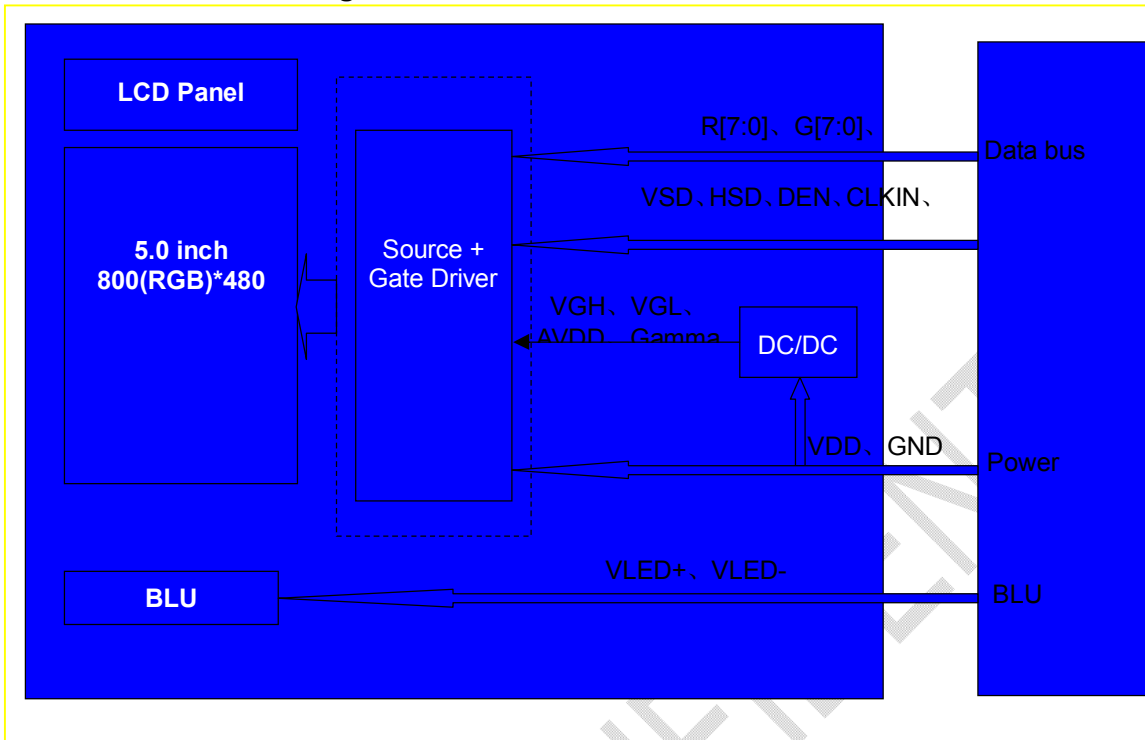
Note4: The LED driving condition is defined for each LED module.



**Figure 4.2 LED connection of backlight**



**4.3 Block Diagram  
LCD Module diagram**



## 5 Timing Chart

### 5.1 Input Clock and Data Timing

Parameter	Symbol	Min	Typ	Max	Unit	Remark
HSD Setup Time	$T_{hst}$	8			ns	
HSD Hold Time	$T_{hhd}$	8	-	-	ns	
VSD Setup Time	$T_{vst}$	8			ns	
VSD Hold Time	$T_{vhd}$	8	-	-	ns	
Data Setup Time	$T_{dsu}$	8			ns	
Data Hold Time	$T_{dhd}$	8	-	-	ns	
DE Setup Time	$T_{esu}$	8			ns	
DE Hold Time	$T_{ehd}$	8	-	-	ns	
CLKIN Cycle Time	$T_{cph}$	20	-	-	ns	
CLKIN Pulse Width	$T_{cwh}$	40	50	60	%	
Output stable time	$T_{sst}$	-	-	6	us	
VDD Power ON Slew rate	$T_{por}$			20	ms	
RSTB pulse width	$TR_{st}$	10	-	-	us	

Table 5.1 Input Clock and Data Timing

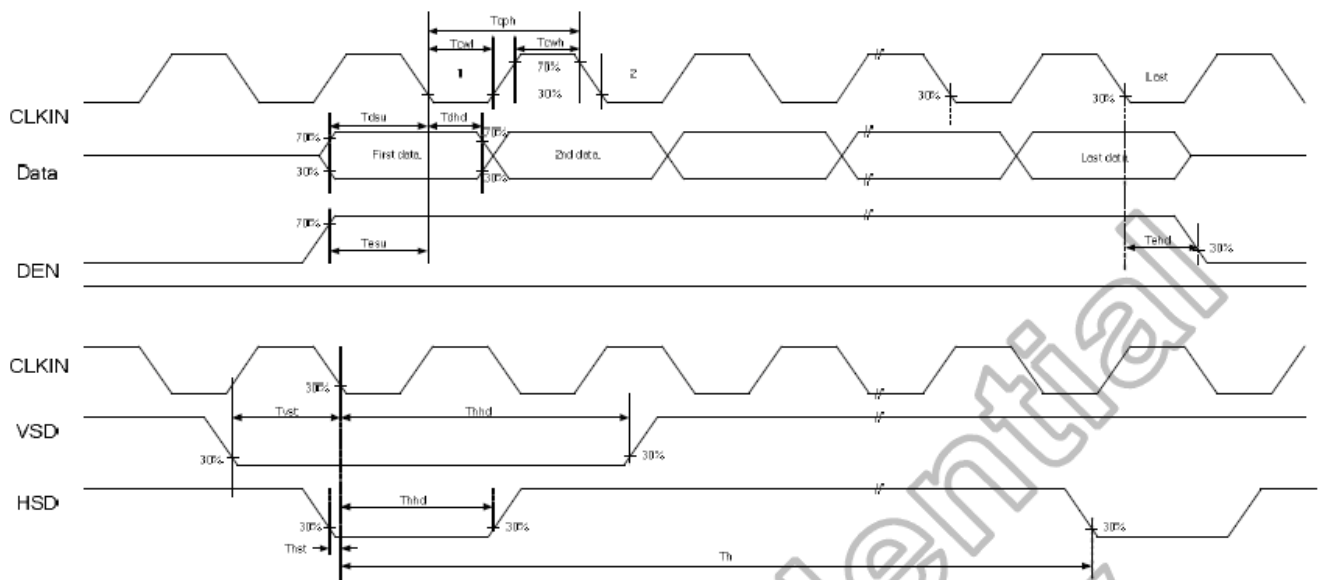


Figure 5.1 Input Clock and Data Timing Diagram

## 5.2 Data Input Format

## 5.2.1 Parameter Setting Of Timing

Parameter	Symbol	Spec			Unit
		Min	Typ	Max	
Horizontal display area	$t_{hd}$	800			CLKIN
CLKIN frequency (60Hz)	$f_{clk}$	-	30	50	MHZ
One Horizontal Line	$t_h$	889	928	1143	CLKIN
HSD pulse width	$t_{hpw}$	1	48	255	CLKIN
HSD blanking	$t_{hb}$	88			CLKIN
HSD front porch	$t_{hfp}$	1	40	255	CLKIN
Vertical display area	$t_{vd}$	480			$T_H$
VSD period time	$t_v$	513	525	767	$T_H$
VSD pulse width	$t_{vpw}$	3	3	255	$T_H$
VSD Blanking(tvb)	$t_{vb}$	32			$T_H$
VSD Front porch (tvfp)	$t_{vfp}$	1	13	255	$T_H$

Table 5.2 Parameter Setting Of Timing

## 5.2.2 Horizontal Input Timing Diagram (SYNC mode)

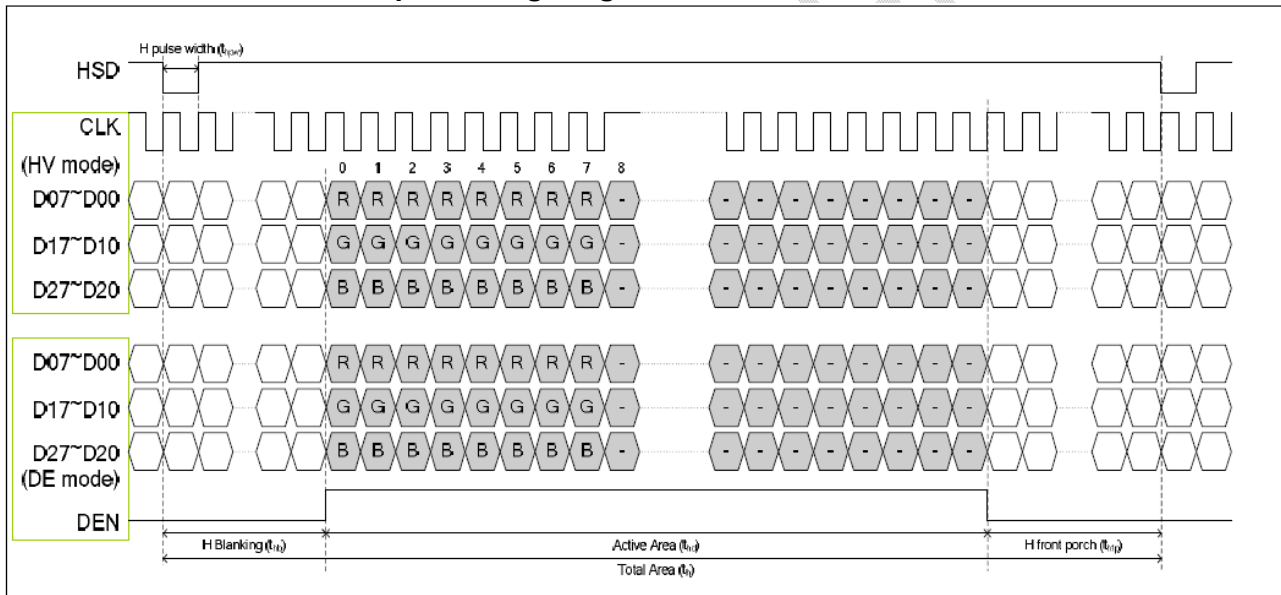
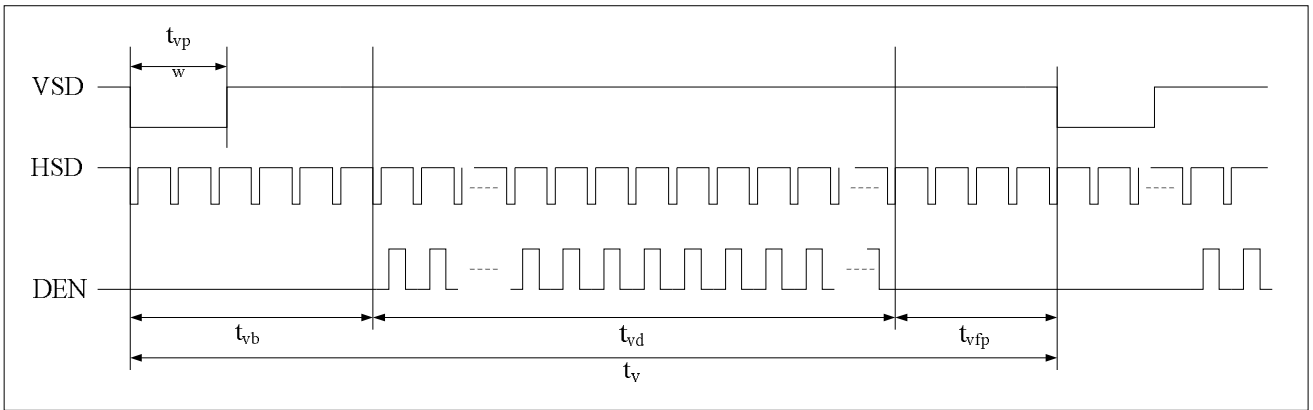


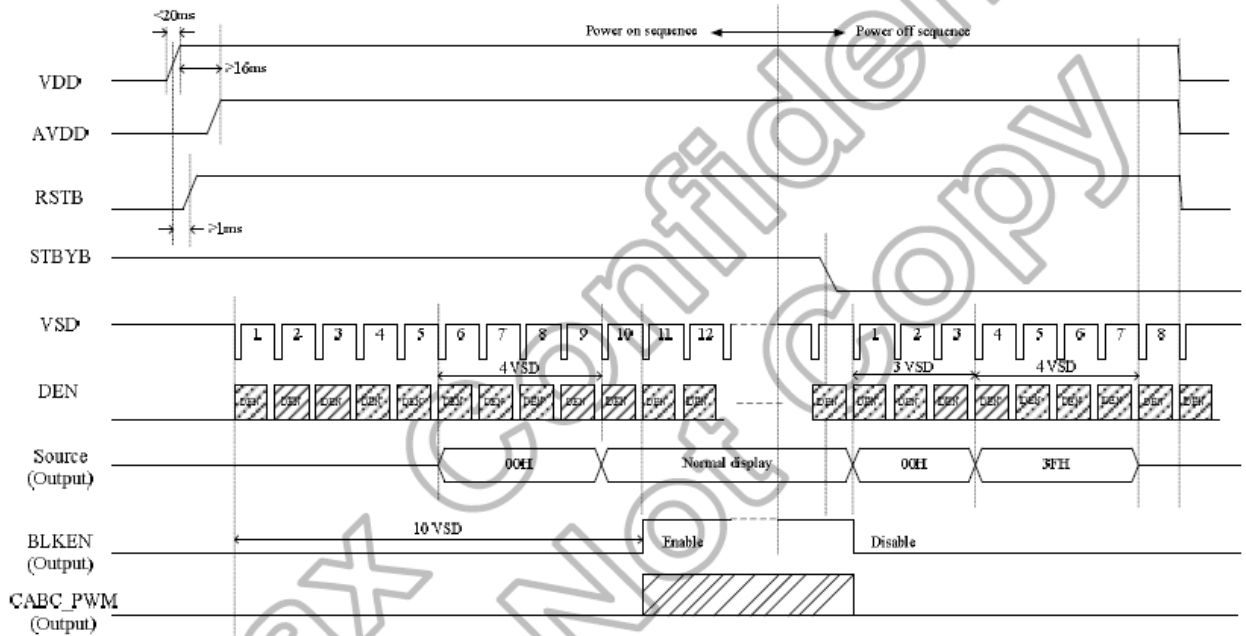
Figure 5.2 Horizontal Input Timing Diagram

**5.2.3 Vertical Input Timing Diagram**

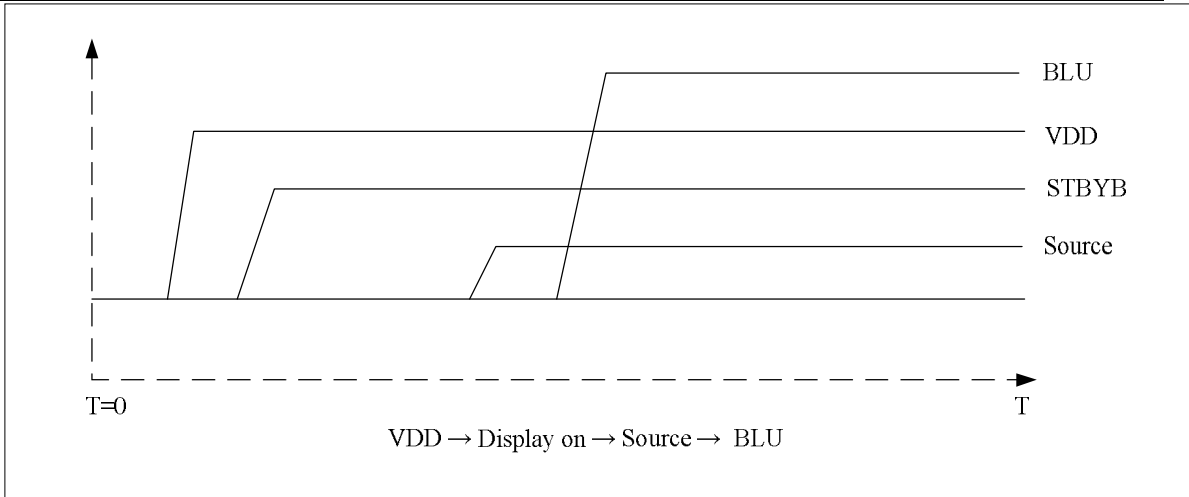


**Figure 5.2.3 Vertical Input Timing Diagram**

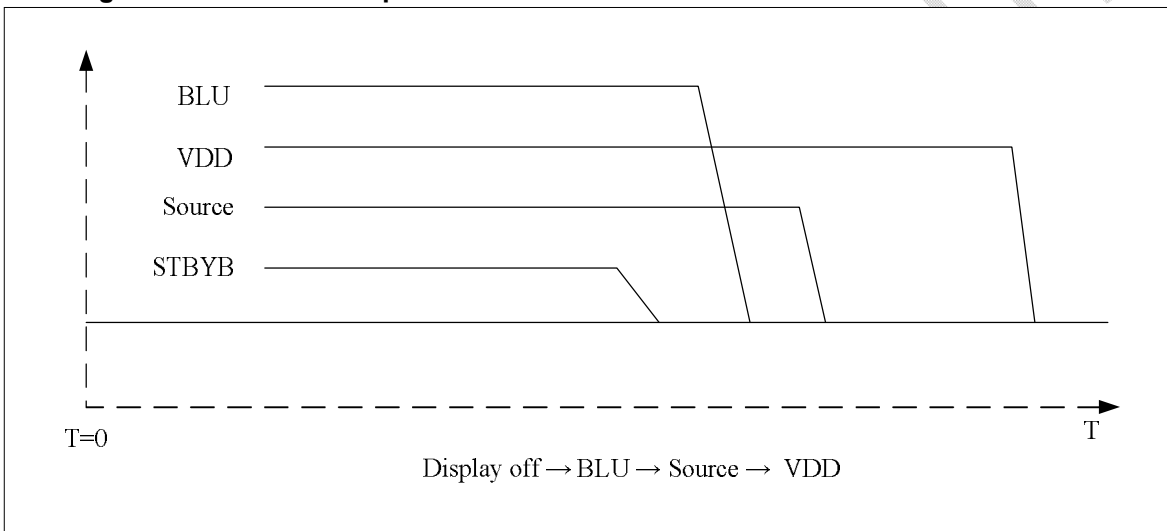
**5.3 Power ON/OFF Sequence**



**Figure 5.3 Power On/Off Sequence**



**Figure 5.3 Power On Sequence**



**Figure 5.3 Power Off Sequence**

## 6 Optical Characteristics

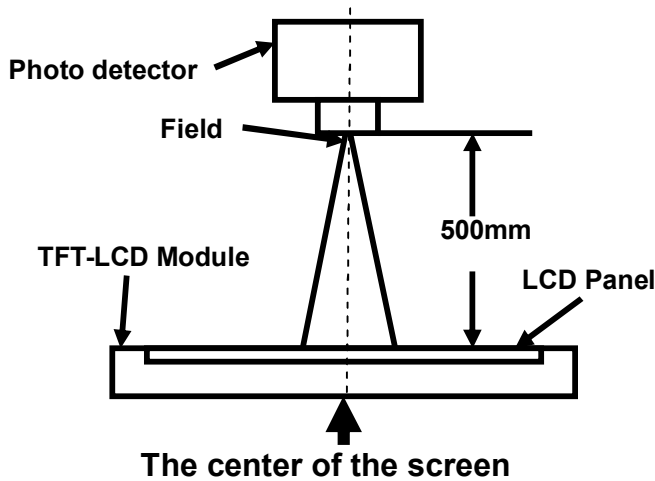
Item	Symbol	Condition	Min	Typ	Max	Unit	Remark
View Angles	$\theta T$	$CR \geq 10$	40	50	-	Degree	Note2,3
	$\theta B$		60	70	-		
	$\theta L$		60	70	-		
	$\theta R$		60	70	-		
Contrast Ratio	CR	$\theta=0^\circ$	500	600	-		Note 3
Response Time	$T_{ON}$	25°C	-	20	30	ms	Note 4
	$T_{OFF}$						
Chromaticity	White	Backlight is on	x	0.253	0.303	0.353	Note 1,5
			y	0.272	0.322	0.372	
	Red		x	0.534	0.584	0.634	Note 1,5
			y	0.298	0.348	0.398	
	Green		x	0.288	0.338	0.388	Note 1,5
			y	0.540	0.590	0.640	
	Blue		x	0.100	0.150	0.200	Note 1,5
			y	0.044	0.094	0.144	
Uniformity	U		75	80	--	%	Note 6
NTSC			--	50	--	%	Note 5
Luminance	L		200	250	--	cd/m <sup>2</sup>	Note 7

Test Conditions:

1.  $I_F = 40$  mA, and the ambient temperature is 25°C.
2. The test systems refer to Note 1 and Note 2.

Note 1: Definition of optical measurement system.

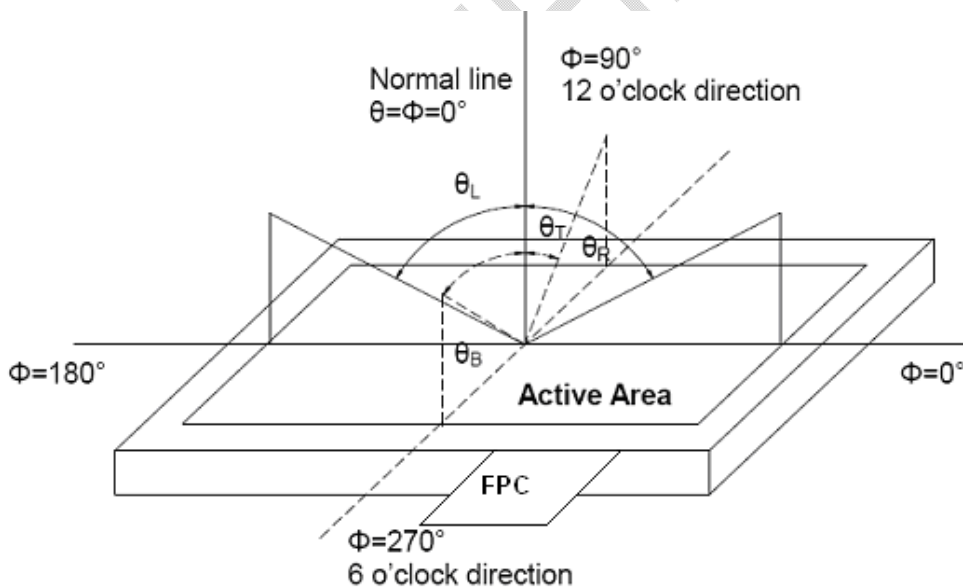
The optical characteristics should be measured in dark room. After 5 Minutes operation, the optical properties are measured at the center point of the LCD screen. All input terminals LCD panel must be ground when measuring the center area of the panel.



Note 2: Definition of viewing angle range and measurement system.

and measurement system.

viewing angle is measured at the center point of the LCD by CONOSCOPE(ergo-80).



Note 3: Definition of contrast ratio

$$\text{Contrast ratio (CR)} = \frac{\text{Luminance measured when LCD is on the "White" state}}{\text{Luminance measured when LCD is on the "Black" state}}$$

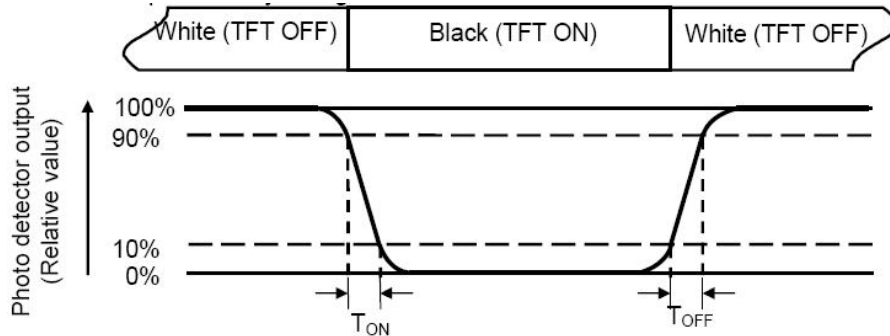
“White state “: The state is that the LCD should drive by  $V_{white}$ .

“Black state”: The state is that the LCD should drive by  $V_{black}$ .

$V_{white}$ : To be determined     $V_{black}$ : To be determined.

Note 4: Definition of Response time

The response time is defined as the LCD optical switching time interval between “White” state and “Black” state. Rise time ( $T_{ON}$ ) is the time between photo detector output intensity changed from 90% to 10%. And fall time ( $T_{OFF}$ ) is the time between photo detector output intensity changed from 10% to 90%.



Note 5: Definition of color chromaticity (CIE1931)

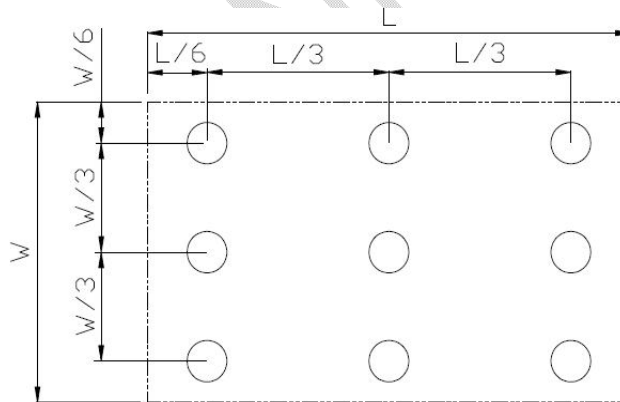
Color coordinates measured at center point of LCD.

Note 6: Definition of Luminance Uniformity

Active area is divided into 9 measuring areas (Refer Fig. 2). Every measuring point is placed at the center of each measuring area.

$$\text{Luminance Uniformity (U)} = L_{\min} / L_{\max}$$

L-----Active area length W----- Active area width



$L_{\max}$ : The measured Maximum luminance of all measurement position.

$L_{\min}$ : The measured Minimum luminance of all measurement position.

Note 7: Definition of Luminance:

Measure the luminance of white state at center point.



**7 Environmental / Reliability Test**

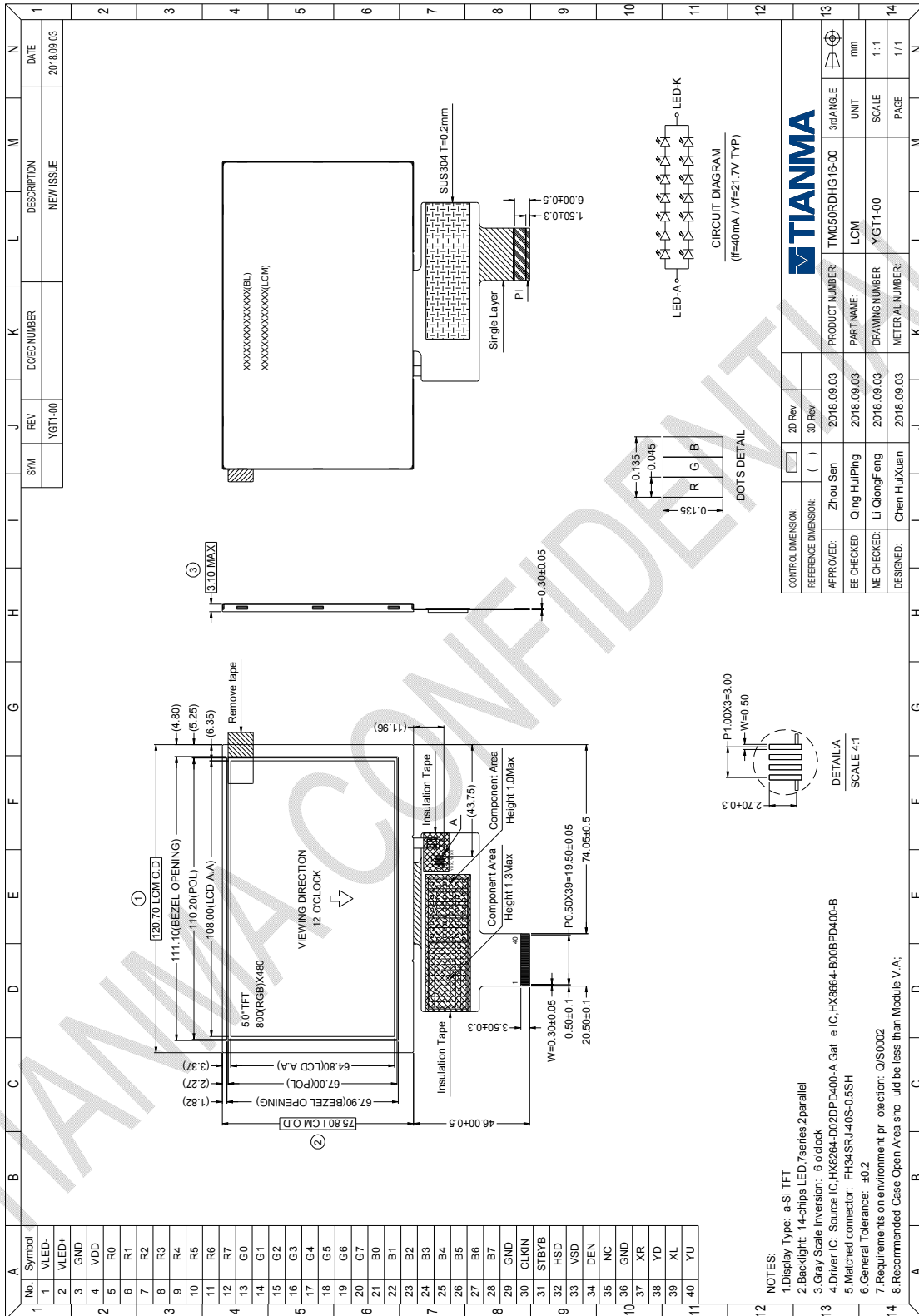
No	Test Item	Condition	Remarks
1	High Temperature Operation	Ta=+70℃, 96 hours	IEC60068-2-1:2007 GB2423.2-2008
2	Low Temperature Operation	Ta=-20℃, 96 hours	IEC60068-2-1:2007 GB2423.1-2008
3	High Temperature Storage	Ta=+80℃, 96 hours	IEC60068-2-1:2007 GB2423.2-2008
4	Low Temperature Storage	Ta=-30℃, 96 hours	IEC60068-2-1:2007 GB2423.1-2008
5	Storage at High Temperature and Humidity	Ta=+60℃, 90% RH 96 hours	IEC60068-2-78 :2001 GB/T2423.3—2006
6	Thermal Shock (non-operation)	-20℃ 30min ~+80℃ 30min, Change time: 5min, 20 cycles	Start with cold temperature, End with high temperature, IEC60068-2-14:1984,GB2423.22-2002
7	ESD	C=150pF,R=330Ω, 5 point/panel, Air: ±8KV, 5 times; Contact ±4KV,5times (Environment:15℃ ~35℃,30%~60%,80Kpa~106Kpa)	IEC61000-4-2:2001 GB/T17626.2-2006
8	Package Drop Test	Height:60cm,1corner,3edges,6surfaces	IEC60068-2-32:1990 GB/T2423.8—1995
9	Package Vibration Test	频率: 5-20-200HZ, PSD: 0.01-0.01-0.001 Total:0.781g2/HZ, 时间: x/y/z各方向30min	IEC60068-2-34 GB/T2423.11

Note1: Ta is the ambient temperature of sample.

Note2: Before cosmetic and function test, the product must have enough recovery time, at least 24 hours at room temperature.

Note 3: In the standard condition, there shall be no practical problem that may affect the display function. After the reliability test, the product only guarantees operation, but don't guarantee all of the cosmetic specification.

# 8 Mechanical Drawing



SYM	REV	DCEC NUMBER	DESCRIPTION	DATE
YGT1-00	YGT1-00		NEW ISSUE	2018.09.03

CONTROL DIMENSION:	2D Rev.			
REFERENCE DIMENSION:	( )	3D Rev.		
APPROVED:	Zhou Sen	2018.09.03	PRODUCT NUMBER:	TM050RDHG16-00
EE CHECKED:	Qing HuiPing	2018.09.03	PARTNAME:	LCM
ME CHECKED:	Li QiangFeng	2018.09.03	DRAWING NUMBER:	YGT1-00
DESIGNED:	Chen HuiXuan	2018.09.03	MATERIAL NUMBER:	

No.	Symbol
1	VLED-
2	VLED+
3	GND
4	VDD
5	R0
6	R1
7	R2
8	R3
9	R4
10	R5
11	R6
12	R7
13	G0
14	G1
15	G2
16	G3
17	G4
18	G5
19	G6
20	G7
21	B0
22	B1
23	B2
24	B3
25	B4
26	B5
27	B6
28	B7
29	GND
30	CLKIN
31	STBY/B
32	HSD
33	VSD
34	DEN
35	NC
36	GND
37	XR
38	YD
39	XL
40	YU

NOTES:  
 1. Display Type: e-S1 TFT  
 2. Backlight: 14-chips LED, 7series 2parallel  
 3. Gray Scale Inversion: 6 o'clock  
 4. Driver IC: Source IC:HX8264-D02DPD400-A Gat e IC:HX8664-B00BPD400-B  
 5. Matched connector: FH34SRJ-40S-0.5SH  
 6. General Tolerance: ±0.2  
 7. Requirements on environment pr otection: Q/S0002  
 8. Recommended Case Open Area sho uld be less than Module V.A;

## 9 Packing Drawing

### 9.1 Packaging Material

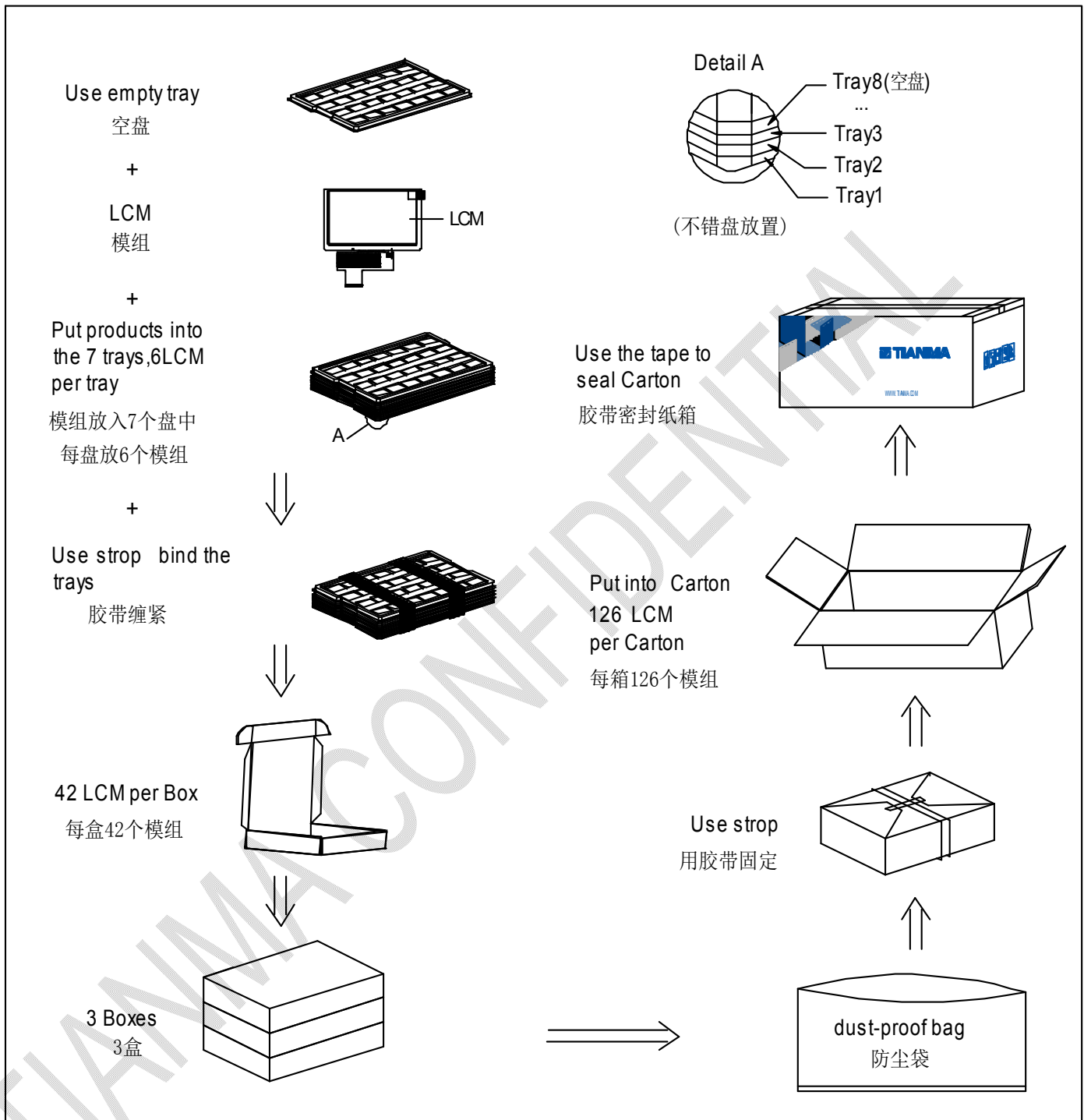
No	Item	Model (Materiel)	Dimensions(mm)	Unit Weight(Kg)	Quantity	Material Number
1	LCM module	TM050RDHG16-00	120.7×75.8×3.1	TBD	126	TM050RDHG16-00
2	Tray	PET (Transmit)	485×330×13	TBD	24	1150343670
3	Dust-proof Bag	PE	700×545×0.05	TBD	1	1680009800
4	BOX	CORRUGATED PAPER	520×345×74	TBD	3	1680318940
5	Carton	CORRUGATED PAPER	544×365×250	TBD	1	1680007623
6	Total weight	TBD				

Note: Packaging Specification and Quantity

Module quantity in a carton: 28pcs(per row)×2(per column)×2= 112pcs

### 9.2 Packaging Specification and Quantity

(1) LCM quantity per tray: 3 row × 2 column =6
(2) Total LCM quantity in Carton: Number of PET trays 21 × quantity per tray 6= 126
Note: Please refer to the data from “estimated report about the dimension and stack of Carton ”about stacking carton



## **10 Precautions for Use of LCD Modules**

### **10.1 Handling Precautions**

10.1.1 The display panel is made of glass. Do not subject it to a mechanical shock by dropping it from a high place, etc.

10.1.2 If the display panel is damaged and the liquid crystal substance inside it leaks out, be sure not to get any in your mouth, if the substance comes into contact with your skin or clothes, promptly wash it off using soap and water.

10.1.3 Do not apply excessive force to the display surface or the adjoining areas since this may cause the color tone to vary.

10.1.4 The polarizer covering the display surface of the LCD module is soft and easily scratched. Handle this polarizer carefully.

10.1.5 If the display surface is contaminated, breathe on the surface and gently wipe it with a soft dry cloth. If still not completely clear, moisten cloth with one of the following solvents:

- Isopropyl alcohol
- Ethyl alcohol

Solvents other than those mentioned above may damage the polarizer. Especially, do not use the following:

- Water
- Ketone
- Aromatic solvents

10.1.6 Do not attempt to disassemble the LCD Module.

10.1.7 If the logic circuit power is off, do not apply the input signals.

10.1.8 To prevent destruction of the elements by static electricity, be careful to maintain an optimum work environment.

10.1.8.1 Be sure to ground the body when handling the LCD Modules.

10.1.8.2 Tools required for assembly, such as soldering irons, must be properly ground.

10.1.8.3 To reduce the amount of static electricity generated, do not conduct assembly and other work under dry conditions.

10.1.8.4 The LCD Module is coated with a film to protect the display surface. Be care when peeling off this protective film since static electricity may be generated.

### **10.2 Storage precautions**

10.2.1 When storing the LCD modules, avoid exposure to direct sunlight or to the light of fluorescent lamps.

10.2.2 The LCD modules should be stored under the storage temperature range. If the LCD modules will be stored for a long time, the recommend condition is:

Temperature : 0°C ~ 40°C Relatively humidity: ≤80%

10.2.3 The LCD modules should be stored in the room without acid, alkali and harmful gas.

### **10.3 Transportation Precautions**

10.3.1 The LCD modules should be no falling and violent shocking during transportation, and also should avoid excessive press, water, damp and sunshine.